



**IESNA
SUSTAINING
MEMBER**



Test Report Number:	LCZP14070103
Applicant Name:	L-TECH CORPORATION
Applicant Address:	SHAOGANGTOU DISTRICT,QIAOTOU TOWN,DONGGUAN CITY.GUANGDONG PROVINCE,CHINA
Test item:	LED Downlight
Model / Type Reference:	LRKT560/563-9050
Date of Issue:	2014-08-18
Testing Laboratory:	LCTECH (Zhongshan) Testing Service Co.,Ltd 2/F.,Technology and Enterprise Development Center, Guangyuan Road, Xiaolan, Zhongshan, Guangdong, China
Test Specification:	Photometric test (According to IES LM-79-08)
Test Result:	See following pages
Compiled by:	Reviewed by:
2014-08-18 Lin Qiu	2014-08-18 Richard Li
_____	_____
Date Name Signature	Date Name Signature
Remark:	
N/A	
<p>The duplication of this report or parts of it and its use for advertising purposes is only allowed with permission of the testing laboratory. This report contains the result of the examination of the product sample submitted by the applicant. A general statement concerning the quality of the products from the series manufacture cannot be derived therefore.</p>	



DESCRIPTION INFORMATION (From Photometric File)

IESNA:LM-63-1995
[TEST] LCZP14070103
[TESTLAB] LCTECH
[DATE] 2014-8-15
[MANUFAC] L-TECH CORPORATION
[LUMCAT] LRKT560/563-9050
[LUMINAIRE] LED Downlight
[LAMPCAT] LED
[LAMP] LED
[OTHER] ELECTRICAL VALUES:120.00VAC 0.129A 15.34W 0.994

CHARACTERISTICS

Total Luminaire Lumens	1186.46
Luminaire Efficacy	77
Total Luminaire Watts	15
CIE Type	Direct
Spacing Criteria (0-180)	1.20
Spacing Criteria (90-270)	1.20
Spacing Criteria (Diagonal)	1.30
Basic Luminous Shape	Circular
Luminous Length (0-180)	0.10 m (Diameter)
Luminous Width (90-270)	0.10 m (Diameter)
Luminous Height	0.00 m

LUMINANCE DATA (cd/sq.m)

Angle In Degrees	Average 0-Deg	Average 45-Deg	Average 90-Deg
45	57554	57504	57621
55	48261	48365	48418
65	34797	34748	34964
75	15735	16055	16231
85	7685	7590	7542



CANDELA TABULATION



	<u>0</u>	<u>15</u>	<u>30</u>	<u>45</u>	<u>60</u>	<u>75</u>	<u>90</u>
0	518.86	518.86	518.86	518.86	518.86	518.86	518.86
5	515.27	515.58	515.21	515.62	515.67	515.79	516.77
10	506.16	506.46	506.63	506.20	506.58	506.46	507.62
15	491.76	491.55	491.36	491.19	491.85	491.57	492.38
20	470.55	470.62	470.86	470.99	471.51	471.14	471.29
25	444.62	444.56	444.43	444.73	444.91	444.98	445.79
30	413.42	413.38	413.41	413.62	413.82	413.65	413.96
35	377.26	377.62	377.64	377.49	378.23	378.25	378.19
40	337.36	337.98	337.74	337.85	338.04	338.25	338.82
45	294.70	294.54	293.68	294.44	294.67	294.66	295.04
50	248.60	248.30	248.10	248.35	248.14	248.88	248.84
55	200.45	200.76	200.28	200.88	200.46	201.36	201.10
60	152.41	152.51	152.36	152.64	152.63	152.86	152.93
65	106.49	105.74	106.11	106.34	106.55	106.62	107.00
70	63.80	63.99	64.16	64.66	64.83	64.71	64.93
75	29.49	29.97	30.08	30.09	31.18	30.37	30.42
80	11.00	11.08	11.09	11.08	11.14	11.12	10.98
85	4.85	4.90	4.84	4.79	4.85	4.80	4.76
90	0.45	0.44	0.43	0.46	0.46	0.47	0.41
95	0.41	0.41	0.40	0.39	0.40	0.40	0.40
100	0.41	0.42	0.43	0.44	0.45	0.45	0.43
105	0.46	0.44	0.46	0.46	0.46	0.47	0.48
110	0.46	0.50	0.49	0.49	0.49	0.48	0.52
115	0.50	0.51	0.50	0.49	0.51	0.52	0.50
120	0.52	0.52	0.52	0.55	0.52	0.53	0.55
125	0.60	0.60	0.59	0.58	0.58	0.60	0.62
130	0.62	0.62	0.63	0.61	0.62	0.63	0.65
135	0.58	0.58	0.59	0.59	0.60	0.60	0.58
140	0.65	0.69	0.65	0.65	0.70	0.66	0.70
145	0.81	0.82	0.82	0.82	0.83	0.81	0.79
150	1.05	1.05	1.07	1.06	1.07	1.07	1.08
155	1.31	1.34	1.31	1.33	1.31	1.31	1.32
160	1.68	1.68	1.68	1.70	1.70	1.68	1.68
165	2.04	2.08	2.06	2.05	2.06	2.06	2.06
170	2.32	2.29	2.30	2.30	2.30	2.31	2.29
175	2.44	2.46	2.46	2.48	2.47	2.47	2.46
180	2.55	2.55	2.55	2.55	2.55	2.55	2.55



ZONAL LUMEN SUMMARY

Zone	Lumens	%Lamp	%Fixt
0-30	392.16	33.1	33.1
0-40	628.13	52.9	52.9
0-60	1034.28	87.2	87.2
0-90	1182.08	99.6	99.6
90-120	1.45	.1	.1
90-130	1.97	.2	.2
90-150	2.98	.3	.3
90-180	4.39	.4	.4
0-180	1186.47	100	100

Total Luminaire Efficiency = 100%

ZONAL LUMEN SUMMARY

Zone	Lumens
0-10	48.93
10-20	138.54
20-30	204.68
30-40	235.97
40-50	226.81
50-60	179.34
60-70	106.2
70-80	35.83
80-90	5.77
90-100	.46
100-110	.49
110-120	.5
120-130	.52
130-140	.48
140-150	.53
150-160	.62
160-170	.57
170-180	.23

Note: The luminaire was LED luminaire, the luminaire lumens was also considered as bare lamp lumens.

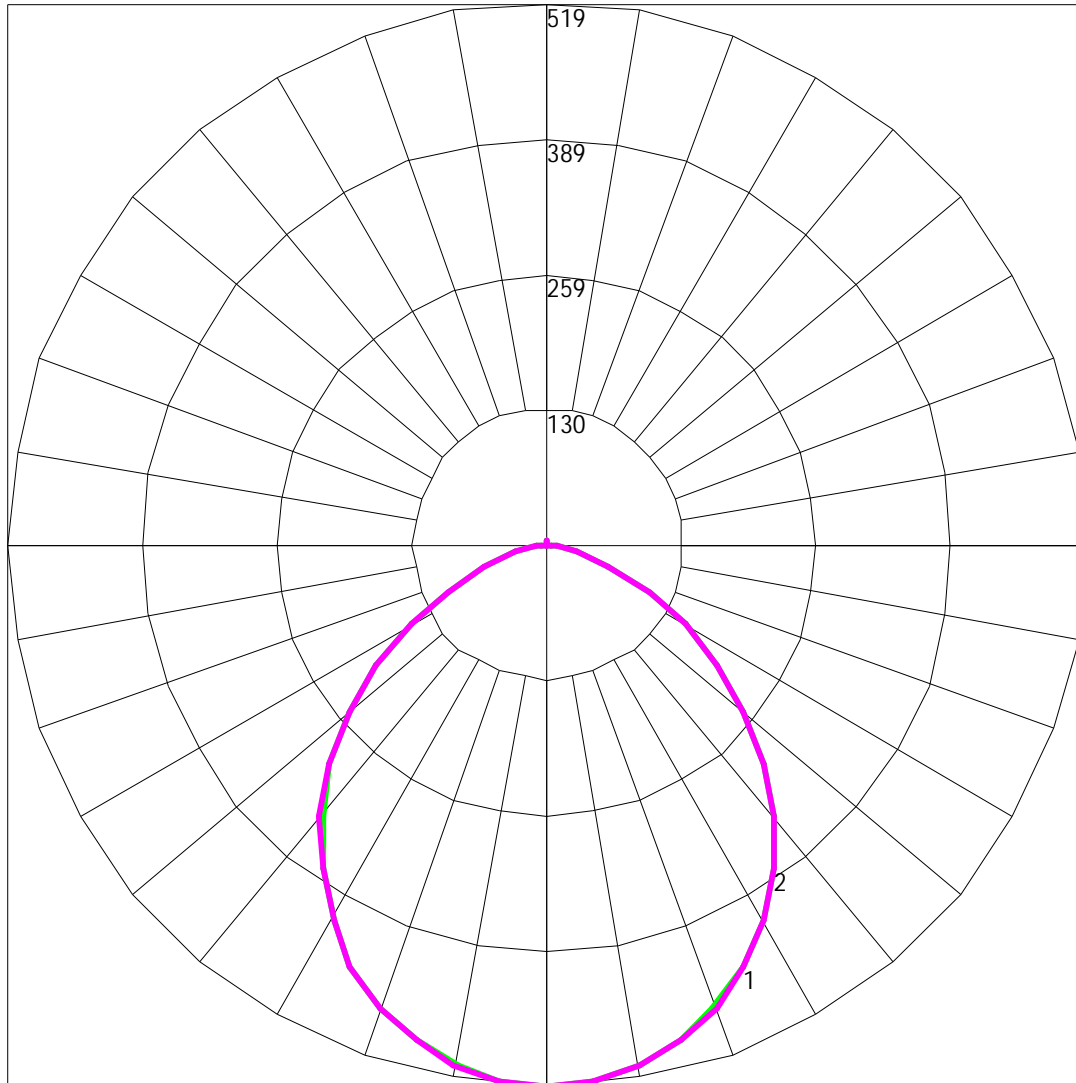


COEFFICIENTS OF UTILIZATION - ZONAL CAVITY METHOD

Effective Floor Cavity Reflectance 0.20

RC	80				70				50			30			10			0	
	RW	70	50	30	10	70	50	30	10	50	30	10	50	30	10	50	30	10	0
0	119	119	119	119	119	116	116	116	116	111	111	111	106	106	106	102	102	102	100
1	110	106	103	99		108	104	101	98	100	97	94	96	94	92	92	90	89	87
2	101	94	88	83		99	92	87	82	89	84	80	85	82	78	82	79	76	74
3	93	84	76	70		91	82	75	70	79	73	69	76	72	67	74	70	66	64
4	86	75	67	61		84	74	66	60	71	65	59	69	63	59	67	62	58	56
5	79	67	59	53		77	66	58	53	64	57	52	62	56	51	60	55	51	49
6	73	61	53	47		72	60	52	46	58	51	46	57	50	46	55	49	45	43
7	68	55	47	41		67	55	47	41	53	46	41	52	45	41	50	45	40	38
8	64	51	43	37		62	50	42	37	49	42	37	48	41	37	46	41	36	35
9	60	47	39	34		58	46	39	34	45	38	33	44	38	33	43	37	33	31
10	56	43	36	31		55	43	35	31	42	35	30	41	35	30	40	34	30	28

Note: The luminaire was LED luminaire, the luminaire lumens was also considered as bare lamp lumens.

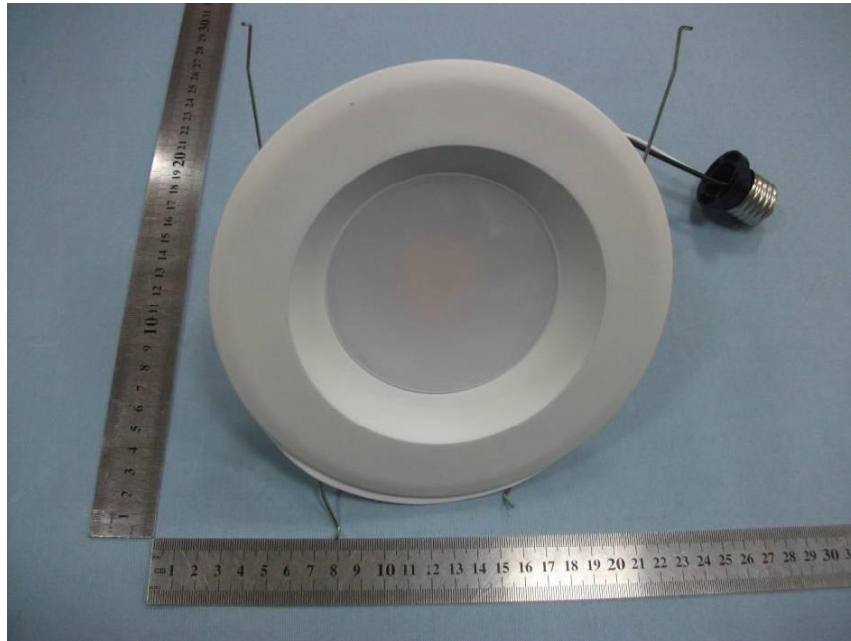


Maximum Candela = 518.86 Located At Horizontal Angle = 0, Vertical Angle = 0

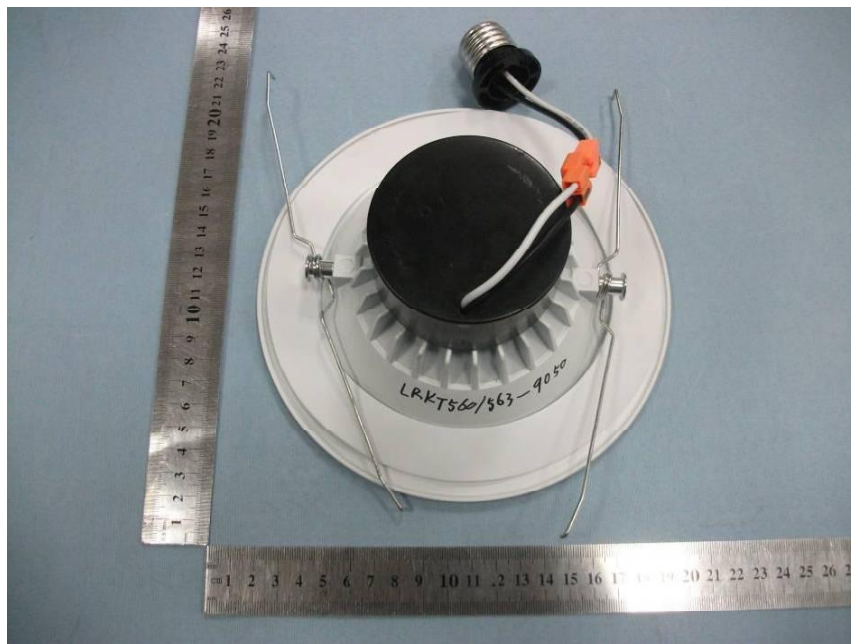
1 - Vertical Plane Through Horizontal Angles (0 - 180)

2 - Vertical Plane Through Horizontal Angles (90 - 270)

Photo of sample



Picture 1 Front View



Picture 2 Back View

--End of test report--